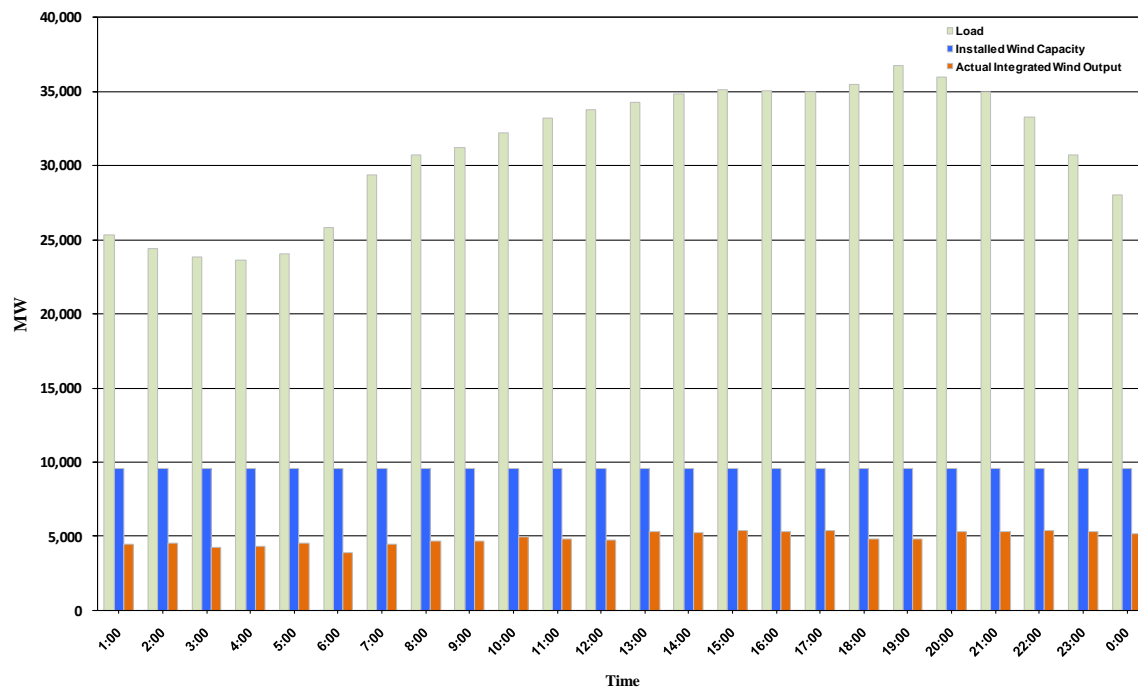




ERCOT Grid Operations Wind Integration Report: 11/11/10

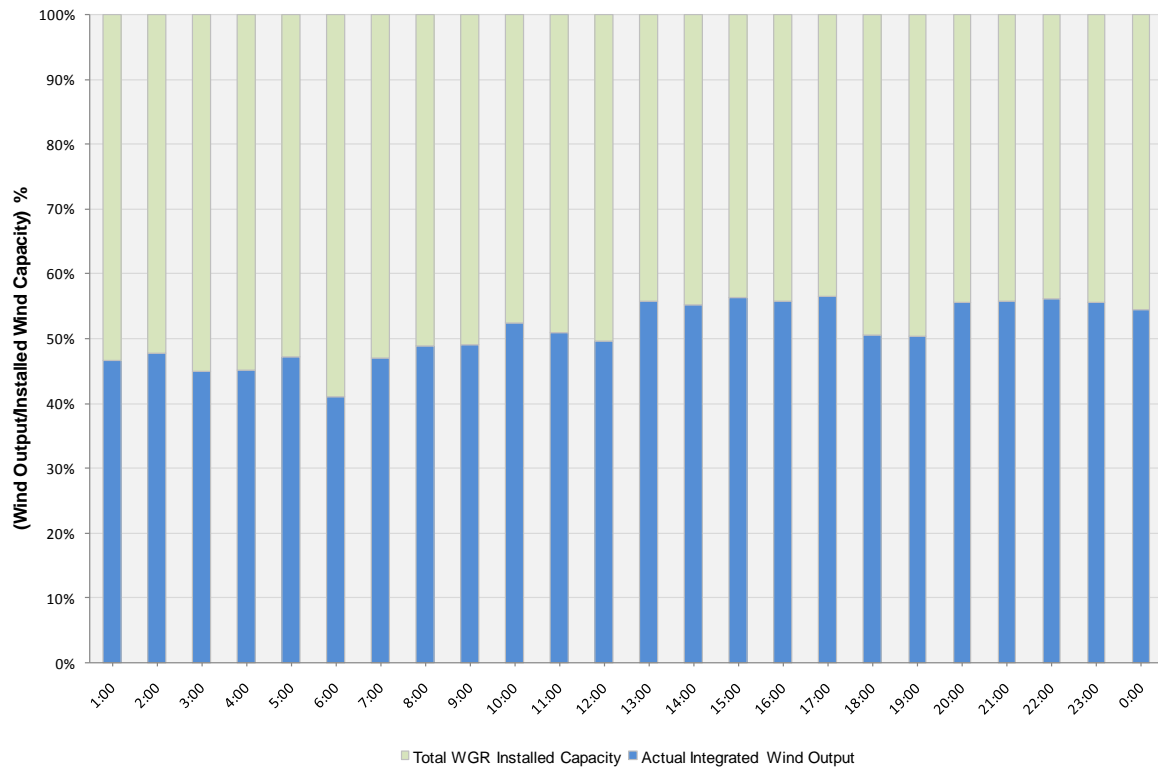
Peak Load	36,757 MW
Load Peak Hour	19
Wind Record 06/12/10	7016 MW
Max Wind value	5894 MW
Wind Peak Hour	12:45:00
Wind Integration %	17.11

Hourly Average Actual Load vs. Actual Wind Output
11-11-2010

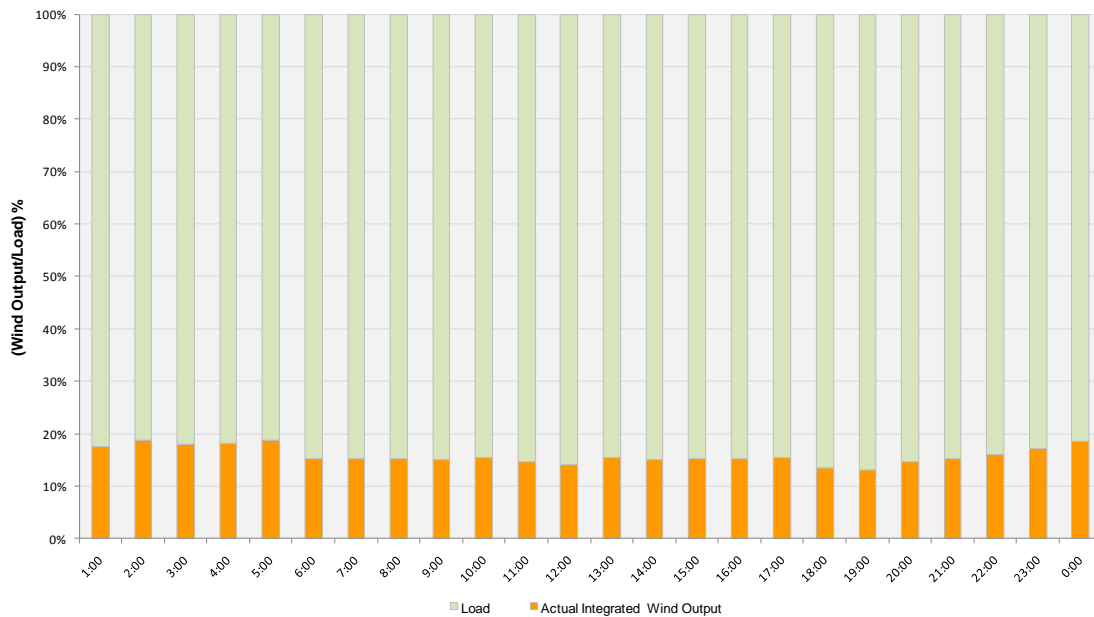




Actual Wind Output as a Percentage of the Total Installed Wind Capacity
11-11-2010



Actual Wind Output as a Percentage of the ERCOT Load
11-11-2010





ERCOT Load vs. Actual Wind Output 11/4/10 - 11/11/10

